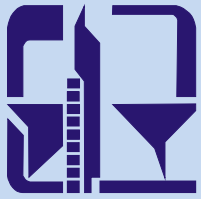




# **Faculty of Civil Engineering and Building Services**

[www.ce.tuiasi.ro](http://www.ce.tuiasi.ro)





# Building services







- **Concrete, Building Materials, Technology and Management**

- **Civil Engineering and Structural Mechanics**

- **Transportation and Foundation**





## Technical University “Gh. Asachi” Iasi Faculty of Civil Engineering



Technical University of Iasi (UTI) is the second largest School of Engineering and Applied Science in Romania and one of the leading research universities in the country.

- Two of its most effective research units are the “*The Research Centre in Civil and Structural Engineering*” and “*The Research Centre in Geotechnics, Foundations and Modern Transportation Infrastructures*”.
- These centres are equipped with a **Seismic Platform**, an **ALT Road Research Laboratory** where accelerated road materials and pavement testing can be performed. In addition, new **Laboratories** for building materials, concrete and reinforced concrete, geotechnics and foundations have been modernised.

**Previous FP experiences :**

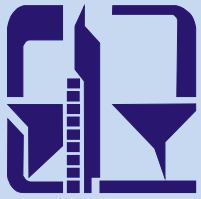
- **FP6/EcoLanes** : <http://ecolanes.shef.ac.uk/>
- **FP7/ASSET-ROADS** : <http://www.project-asset.com/>



## **Research Areas**

- ☐ **energy conservation in buildings**
- ☐ **building aerodynamics**
- ☐ **dynamic and seismic system identification**
- ☐ **composite and hybrid structures**
- ☐ **strengthening systems with polymeric composites**
- ☐ **energetic rehabilitation of HVAC systems in buildings**
- ☐ **modern steel fibre reinforced pavement structures**
- ☐ **risk management of landslides in urban areas**





# **Accelerated Load Testing of Roads**





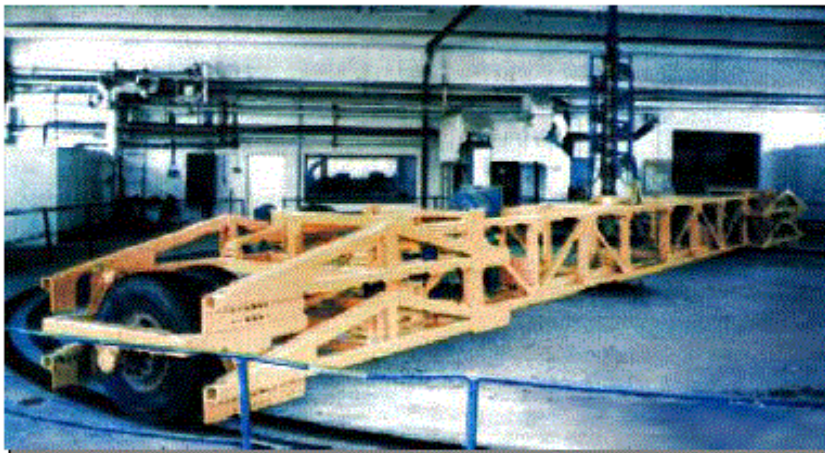
# Technical University “Gh. Asachi” Iasi

## Faculty of Civil Engineering

### ALT Research Facility

Type: Circular Test Track

Construction (commissioned): 1982



#### Dimensions

Mean diameter	15
No. of arms	2

#### Loading

Range of Load <sup>(*)</sup>	115 kN
Transverse distribution	$\pm 300$ mm

<sup>(\*)</sup> Wheels loads (half axle) are converted to the corresponding axle loads.

#### Axle configuration

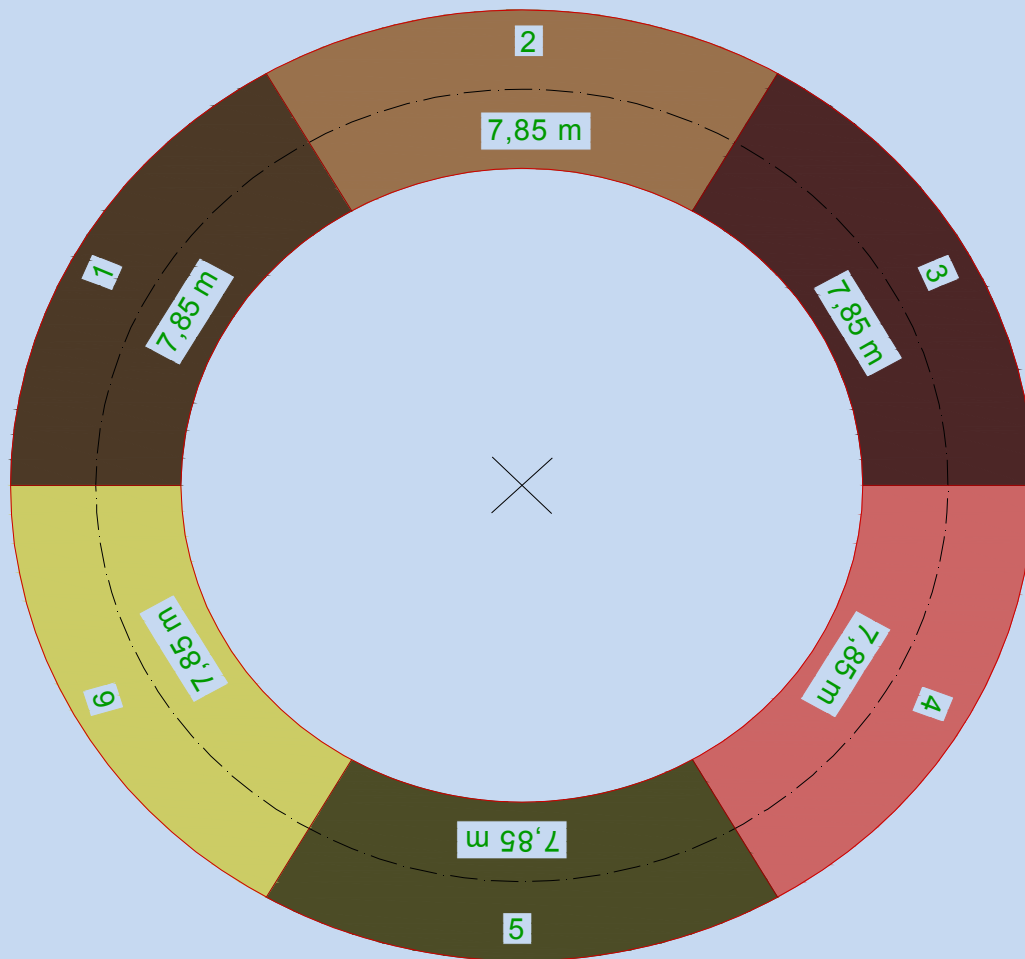




# Technical University “Gh. Asachi” Iasi

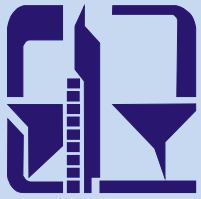
## Faculty of Civil Engineering

### ALT Research Facility



- ① - Classical pavement structure currently used No.1
- ② - The new long lasting pavements LLP 1 No.2
- ③ - Classical pavement structure currently used No.3
- ④ - The new long lasting pavements LLP 3 No.4
- ⑤ - Classical pavement structure currently used No.5
- ⑥ - The new long lasting pavements LLP 3 No.6

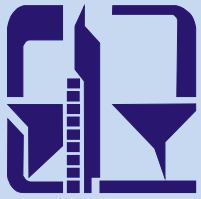




# Laboratory of Geotechnical Engineering and Soil Mechanics







# Dynamic and Seismic Laboratory







# Laboratory of Composite and Steel Structures

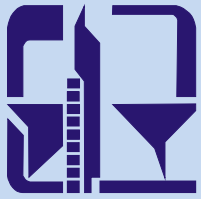




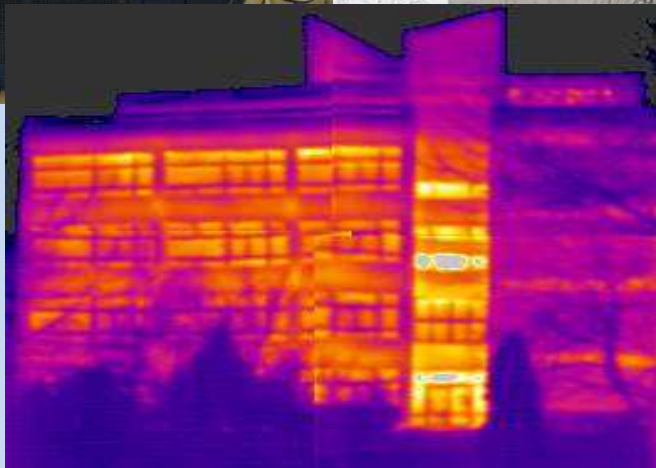


# Laboratory of Building Aerodynamics





# **Laboratory of Building Physics and Infrared Thermography**







# CAD Laboratory







## **Membership to International Scientific Societies**

- **IABSE** (International Association for Bridge and Structural Engineering)
- **CIB** (Conseil International du Batiment)
- **ASCE** (American Society of Civil Engineering)
- **ASTM** (American Society for Testing and Materials)
- **fib** (Federation Internationale du Beton)
- **ITA** (International Tunneling Association)
- **ISSMGE** (Institute Society for Soil Mechanics and Geotechnical Engineering)
- **AICPR** (Association Mondiale de la Route)
- **IASMIRT** (International Association Structural Mechanics in Reactor Technology)
- **UCEE** (UNESCO Centre for Engineering Education)
- **GAAM** (Gesellschaft für Angewandte Mathematik und Mechanik)
- **EASC** (European Association of Structural Control)
- **ICL** (International Consortium of Landslides)
- **EUROMECH** (European Society of Mechanics)



# **International Agreements**

- **University of Applied Sciences of Konstanz Germany**
  - **Ruhr University of Bochum**
    - **University of Sheffield**
    - **City University London**
  - **University of East London**
  - **Universida du Catalunya**
    - **NTU-Athens**
  - **Thessaloniki University**
    - **University of Patras**
    - **IST Lisabona**
  - **Universidade do Minho**
    - **Napoli University**
    - **Sapienza University**
    - **Firenze University**
  - **Universita degli Studi di Udine**
    - **Gent University**
    - **Lulea University**
- **Budapest Technological University**
  - **Universite de Reims**
  - **Universite d'Artois**
  - **Universite d'Orleans**
  - **Akdeniz University**