

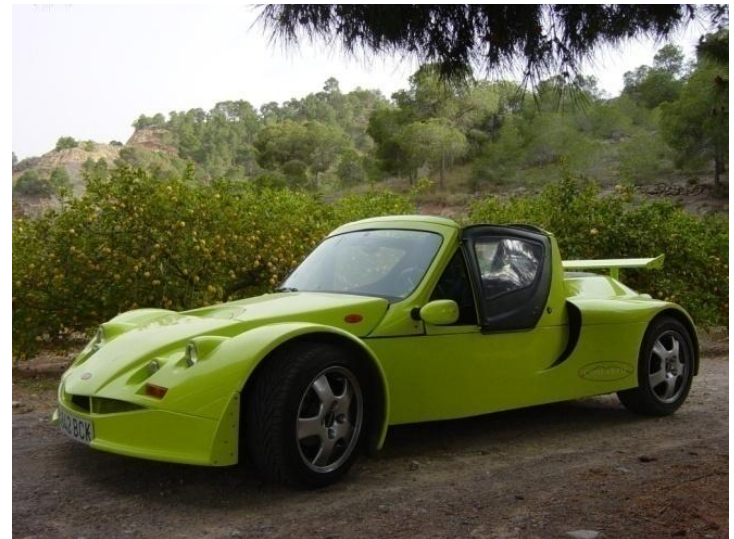


Electric Vehicles in the Postal Service



Birth of the company

- 1999, Beniaján, Murcia, Spain
- Sport cars design and development



S-1: First model from Comarth, probate in 2001



Birth of the company


- X-Tamy: second model of comarth
- Launch of this model in International Paris show 2002.



Car setup in circuits with experimented pilots
Integration in the Spanish GT Championship



Comarth Engineering: ELECTRIC VEHICLES

- Important experience in Sport cars.
- Team of engineers from ISAT (Nevers, France)
- New Industrial Approach.
- 2005/2007: Marketing Analysis :  - An important need of electric car for leisure and working
- Define model strategy.
- 2007: Starting production pre-serial for the first electric model by Comarth.



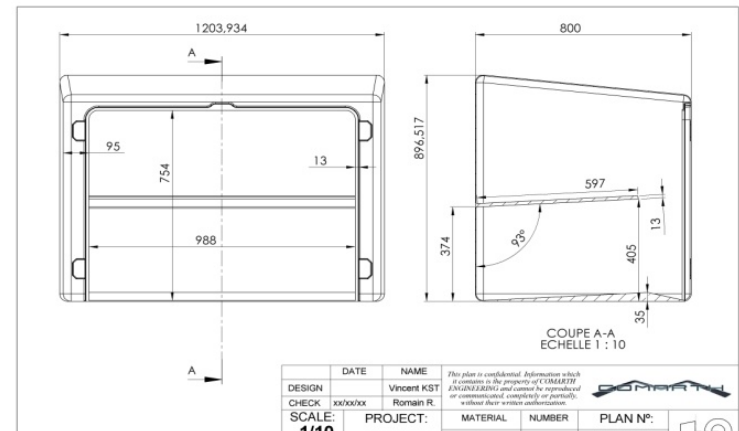
CROSS RIDER



CURRENT RANGE **Work**

Cross Rider Pro

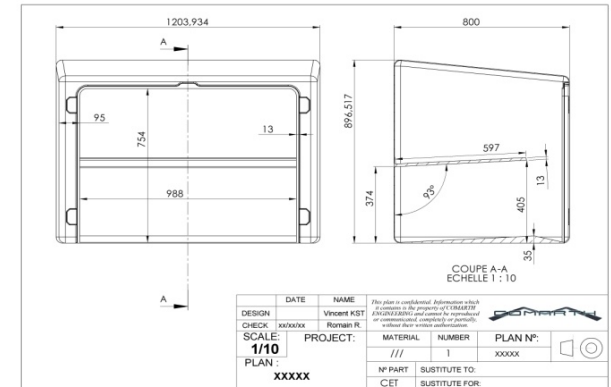
Similar to Spanish Post



CURRENT RANGE **Work**

Cross Rider Pro

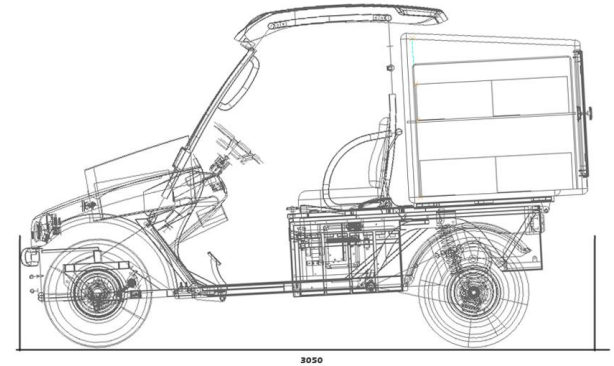
Similar to French Post



CURRENT RANGE **Work**

Cross Rider Pro L

Similar to Norway Post



Loading Box : 1.200 L.



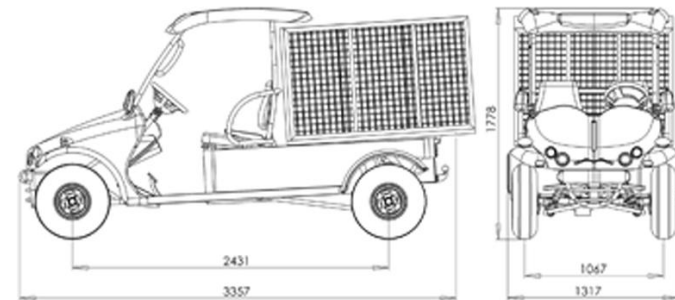
100%
E
ELECTRIC
by COMARTH

100%
E
ELECTRIC
by COMARTH



CURRENT RANGE **Work**

Cross Rider XL



100%
E



100%
E
ELECTRIC
by COMARTH

CURRENT RANGE **Work**

CR Sport

Similar to EADS Airbus



CURRENT RANGE **Work**

CR Sport

S



3000

Loading Box : 800 L.

L



3200

Loading Box : 1200 L.

XL



3450

Loading Box : 1620 L.



100%



Some clients and purposes



Golf course construction, La Peraleja Sucina (MU).



Vehicle for olive harvest,



Internal courier transport, Company UMANO



Intern cleaning vehicle, service company EULEN.



Solar panel maintenance in Toledo.



Filmmaking vehicle GAUMONT.



Principal clients

Municipalities:



San Javier ,Mar Menor (MU).
Beach maintenance.



Ayto.de Murcia(MU).
Staff transport.



City Hall of Molina Del Segura(MU).
Department of enviroment



Sevilla City Hall.
Health/emergency kit



City Hall of Molina Del Segura(MU).



The future



Toy Truck :

Electric vehicle for professionals
that allow a daily dynamic work. :
Short routes with big load capacity.



The future

Becool :

Urban car with three places
With an adaptation for disabled persons.



Production process



Design Department

- sketches
- Prototypes



Development Department

- Engineering
- Chassis

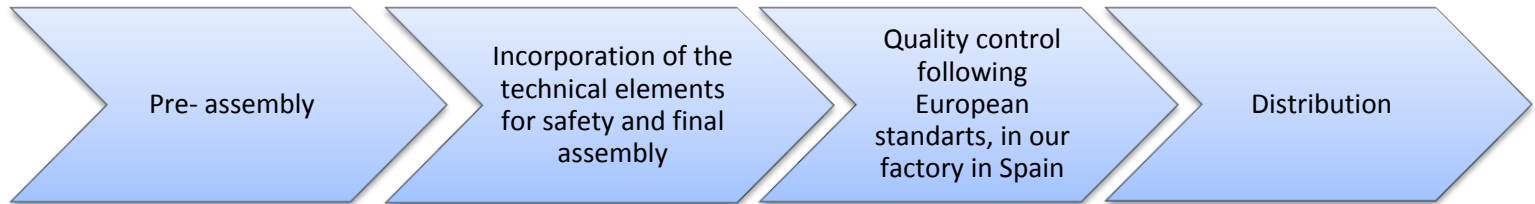


Production department and quality control

100 % Made in Spain



Production & logistic



Technical aspects

Set of battery + charger + controller

- The best value for money

Controller, brand CURTIS

- World Leader
- Best reliability on the market
- The best efficiency

Charger IES

- The best power and reliability in packs installed in the vehicle
- Charge 4 hours max 220 domestic outlets v. 16A



Our strengths

- Autonomy and loading speed
- Vehicles conforming to European standards. (Approval)
- Quality
- The best relation price / service provision on the market: from 8 000 to 12 000 €
- Adaptability of our vehicles to customer demand
- Reliability
- Experience



Distribution Network

Comarth have different distributors in :

- Spain
- France
- Switzerland
- Norway
- Great-Britain UK.
- Holland
- Romania
- Italy



Worker teams

Founder and CEO: Jose Antonio Martinez Marin

ORGANIZACIÓN DEPARTAMENTAL	NÚMERO
DESIGN & ENGINEERS TEAM	15
Car engineer.	3
Industrial engineer.	2
Telecommunications Engineers	1
Car Designer	1
Practical enginners ISAT	4
Practical enginners UMU	4
DEVELOPMENT TEAM	4
Structure	2
Mechanical	2
PRODUCTION TEAM	12
Pre-assembly	3
Mechanical	4
Electronic	3
Finishes	2
COMMERCIAL AND ADMINISTRATIVE TEAM	6
Total	37

